

Read and Save These Instructions

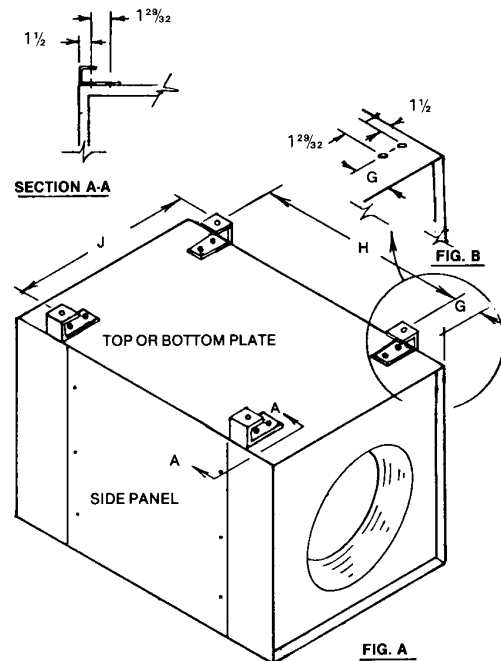
Installation Instructions for Support Brackets, Base Support Isolators & Hanging Support Isolators for Inline Centrifugal Duct Fan, Direct and Belt Driven

HORIZONTAL INSTALLATION MOTOR TOP OR BOTTOM

TABLE 1

Fan Size	G	H	J	Bolt Size	Hole
100	3	11 ¹ / ₄	11 ¹ / ₂	5/16 X1	1 ¹ / ₃₂
120	3	16 ⁵ / ₁₆	15 ³ / ₈	5/16 X1	1 ¹ / ₃₂
137	3	19 ⁵ / ₁₆	18	5/16 X1	1 ¹ / ₃₂
161	3	23 ⁷ / ₈	21 ³ / ₄	5/16 X1	1 ¹ / ₃₂
200	4	29	27 ¹ / ₂	3/8 X1	1 ³ / ₃₂
245	4	37 ³ / ₁₆	34 ¹ / ₄	3/8 X1	1 ³ / ₃₂
300	4	47 ³ / ₁₆	42 ¹ / ₂	3/8 X1	1 ³ / ₃₂
365	4	59 ¹ / ₂	52 ¹ / ₄	3/8 X1	1 ³ / ₃₂
425	4	64 ³ / ₄	60 ⁵ / ₈	3/8 X1	1 ³ / ₃₂

1. Determine the location of holes in fan top or bottom plate from Fig. B. All dimensions and holes sizes are given in Table 1. (Holes are to be drilled in top plate for hanging isolators and in the bottom plate for base mounted isolators.)
2. Location of holes should be marked on the top or bottom plate of fan. **Do not** attempt to mount brackets on the side of the fan.
3. Drill designated size holes for support brackets.
4. Bolt brackets in the position shown in Section A-A with edge of bracket flush with edge of fan. Nut and bolt arrangement is shown in Fig. F. Sizes 100 thru 161 do not have reinforcing plate. For ease of installation side panels should be removed to tighten bolts.

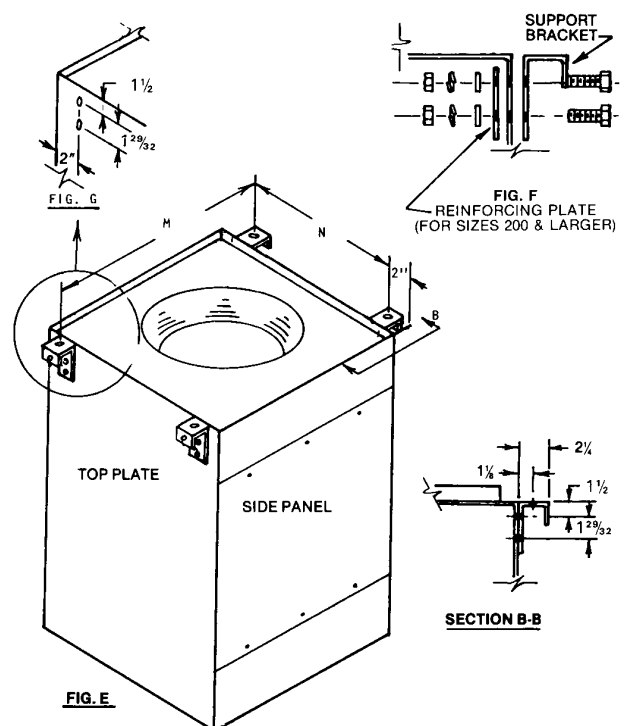


VERTICAL INSTALLATION

TABLE 2

Fan Size	M	N	Hole Dia.	Bolt Size
100	16 ¹ / ₄	10	1 ¹ / ₃₂	5/16 X1
120	20 ¹ / ₈	13 ⁷ / ₈	1 ¹ / ₃₂	5/16 X1
137	22 ³ / ₄	16 ⁷ / ₈	1 ¹ / ₃₂	5/16 X1
161	26 ¹ / ₂	20 ¹ / ₄	1 ¹ / ₃₂	5/16 X1
200	32 ¹ / ₄	26	1 ³ / ₃₂	3/8 X1
245	39	32 ³ / ₄	1 ³ / ₃₂	3/8 X1
300	47 ¹ / ₄	41	1 ³ / ₃₂	3/8 X1
365	57	50 ³ / ₄	1 ³ / ₃₂	3/8 X1
425	63 ⁷ / ₈	59 ⁵ / ₈	1 ³ / ₃₂	3/8 X1

1. Determine the location of holes in fan top plate and bottom plate from Fig. G.
2. Location of holes should be marked on top and bottom of fan. **Do not** attempt to mount brackets on sides of fan.
3. Drill designated size holes for support brackets. Hole sizes are given in Table 2.
4. Bolt support brackets in position shown in Section B-B with top edge of support bracket flush with top of fan. Nut and bolt arrangement is shown in Fig. F. Sizes 100 thru 161 do not have reinforcing plate. For ease of installation side panels should be removed to tighten bolts.



HORIZONTAL INSTALLATION MOTOR SIDE MOUNTED

TABLE 3

Fan Size	G	H	M	Hole Size	Bolt Size
100	3	11 $\frac{1}{4}$	16 $\frac{1}{4}$	$\frac{11}{32}$	$\frac{5}{16}$ X1
120	3	16 $\frac{3}{16}$	20 $\frac{1}{8}$	$\frac{11}{32}$	$\frac{5}{16}$ X1
137	3	19 $\frac{5}{16}$	22 $\frac{3}{4}$	$\frac{11}{32}$	$\frac{5}{16}$ X1
161	3	23 $\frac{7}{8}$	26 $\frac{1}{2}$	$\frac{11}{32}$	$\frac{5}{16}$ X1
200	4	29	32 $\frac{1}{4}$	$\frac{13}{32}$	$\frac{3}{8}$ X1
245	4	37 $\frac{5}{16}$	39	$\frac{13}{32}$	$\frac{3}{8}$ X1
300	4	47 $\frac{3}{16}$	47 $\frac{1}{4}$	$\frac{13}{32}$	$\frac{3}{8}$ X1
365	4	59 $\frac{1}{2}$	57	$\frac{13}{32}$	$\frac{3}{8}$ X1
425	4	64 $\frac{3}{4}$	65 $\frac{7}{8}$	$\frac{13}{32}$	$\frac{3}{8}$ X1

- Determine the location of the holes in the fan top plate and the bottom plate from Fig. M and Table 3.
- Location of holes should be marked on top and bottom of fan. **Do not** attempt to mount brackets on side of fan.
- Drill designated size holes for support brackets. Hole sizes are given in Table 3.
- Bolt support brackets in position as shown in Section C-C with the top edge of the support bracket flush with the top edge of the fan. Nut and bolt arrangement is shown in Fig. F. Sizes 100 thru 161 do not have the reinforcing plate. For ease of installation, side panels should be removed to tighten bolts.

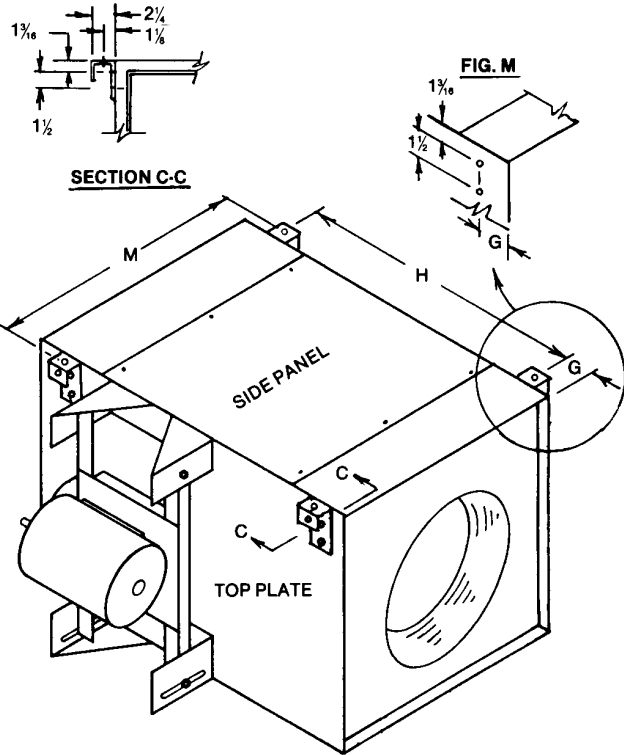


FIG. L

HANGING ISOLATOR INSTALLATION

- Bolt hanging isolator to support bracket as shown in Fig. C, with the isolator spring upward. Use the arrangement shown in Fig. D for bolt, washers and nut.
- Isolator hanging rods are to be positioned according to the H & M dimensions in Fig. L for horizontal support with motor side mounted and the M & N dimensions in Fig. E for vertical support. Dimensions are given in corresponding Tables. Attach isolator hanging rods to ceiling or supports.
- Hanging rods should have at least 5 inches of threads. One nut should be run up on the rod. Then rod should be run thru isolator as shown in Fig. C with nut on end of rod. Top nut should then be run down to top of isolator.

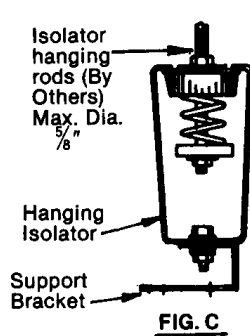


FIG. C

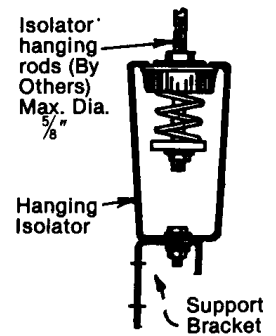


FIG. H

BASE ISOLATOR INSTALLATION

- The level bolt in the base isolator is tapped to receive the locking cap screw. Remove the locking cap screw and bolt the base isolator to the support bracket as shown in Fig. J for horizontal support or Fig. K for vertical support.
- Since bolting tends to by-pass the acoustical action of the neoprene pad on the bottom of the mounting, it is recommended that you do not bolt the pad to the floor.

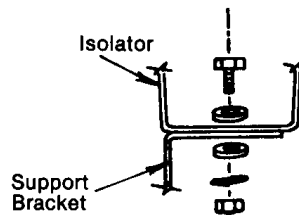


FIG. D

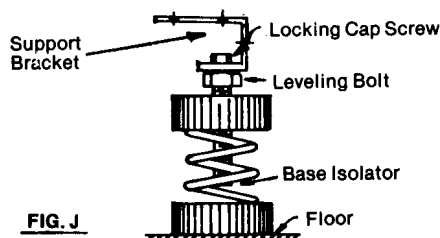


FIG. J

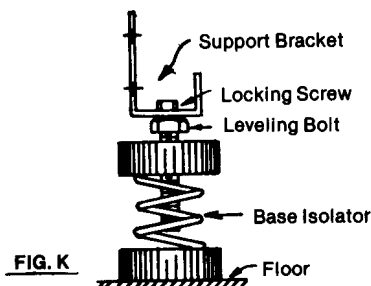


FIG. K